

Child safety

CHILD SEATS

WARNINGS



Do not use a child restraint on a seat with an operational airbag in front of it. There is a risk of death or serious injury when the airbag deploys.



Crash statistics show that children are safest when properly restrained on the rear seat.



Do not use a forward facing child seat until the child using it is above the minimum weight of 9 kg (20 lb.) and able to sit up unaided. Up to the age of two, a child's spine and neck are not sufficiently developed to avoid injury in a frontal impact.



Do not allow a baby or infant to be held or carried on the lap. The force of a crash can increase effective body weight by as much as thirty times, making it impossible to hold onto the child. Children typically require the use of a booster seat appropriate to their age and size, thereby enabling the seat belts to be properly fitted, reducing the risk of injury in a crash. Children could be endangered in a crash if their child restraints are not properly secured in the vehicle.



Do not use a child seat that hooks over the seat back. This type of seat cannot be satisfactorily secured and is unlikely to be safe for your child.

It is very important for all infants and children under 12 years of age to be restrained in a suitable child safety seat appropriate to their age and size.

If it is essential that a child travels in the front passenger seat, Land Rover recommends that the following preparations are made before fitting the child restraint.

- Adjust the front passenger seat fully rearwards.
- Adjust the lumbar support to its minimum support position.
- Adjust the seat cushion to its highest position. If cushion rake adjustment is possible, adjust it to its lowest position.
- Adjust the seat belt adjustable upper anchorage to its lowest position.

WARNING



Do not use a rearward facing child restraint on a seat protected by an airbag in front of it. Doing so increases the risk of death or serious injury when the air bag deploys.



E79258

This symbol is affixed to the end of the fascia on the passenger side. Its purpose is to warn against the use of a rear facing child seat when the front passenger airbag is fitted and operational.

Seat belt locking mechanism

The front passenger, and rear seat belts have a locking mechanism which improves the retention of child seats.

Child safety

The procedure to install a child seat is as follows:

1. Place the child seat in the vehicle, attach the seat belt and secure the buckle in accordance with the manufacturer's fitting instructions.
2. Pull on the shoulder section of the belt to unreel all of the remaining webbing to the limit of its travel. This will engage the automatic locking feature, which then acts as a ratchet only allowing the webbing to retract.
3. Allow the seat belt to retract onto the child seat (a clicking sound will confirm that the ratchet has engaged), while firmly pushing the child seat into the vehicle seat.
4. Ensure that there is no slack in the seat belt by pulling upwards on the shoulder belt immediately above the child restraint. The seat belt should now be locked and the child seat held firmly in position.

When the child seat is removed and all of the seat belt webbing is allowed to retract, the seat belt locking mechanism reverts to normal operation.

CHILD RESTRAINT CHECK LISTS

Every time a child travels in the vehicle observe the following :-

Non-LATCH child restraints

- Carefully follow the instructions provided by the manufacturer of the restraint system.
- Always use the appropriate child restraints and adjust harnesses for every child, every trip.
- Avoid dressing a child in bulky clothing and do not place any objects between the child and the restraint system.

- Regularly check the fit of a child seat and replace seats or harnesses that show signs of wear.
- Ensure that you have removed all slack from the adult seat belt.
- No child seat is completely child-proof. Encourage a child not to play with the buckle or harness.
- Never leave a child unsupervised in the vehicle.
- Activate the rear door child safety locks. See **CHILD SAFETY LOCKS** (page 59).
- Ensure that a child does not exit the vehicle from the side where there is traffic.
- Set children a good example - always wear your seat belt.

LATCH child restraints

- Always attach the top tether when installing the LATCH seat.
- Carefully follow the instructions supplied with the child seat. Always give the LATCH seat a final pull to ensure that the lower anchors are secure.
- Always use the appropriate child restraints and adjust the harnesses for every child, every trip.
- Make sure that a child falls into the correct weight range for the seat. Avoid dressing a child in bulky clothing and do not place any objects between the child and the restraint system.
- Regularly check the fit of a child seat and replace seats and harnesses that show signs of wear.
- No child seat is completely child-proof. Encourage children not to play with the buckle or harness.
- Never leave a child unsupervised in the vehicle.

Child safety

- Activate the rear door child safety locks. See **CHILD SAFETY LOCKS** (page 59).
- Ensure that a child does not exit the vehicle from the side where there is traffic.
- Set children a good example - always wear your seat belt.

Note: The legislation which governs how and where children should be carried when travelling in a vehicle, is subject to change. It is the responsibility of the driver to comply with all regulations in force.

BOOSTER CUSHIONS

In a situation where a child is too large to fit into a child safety seat, but is still too small to safely fit the three point belt properly, a booster seat is recommended for maximum safety. Follow the manufacturer's instructions for fitting and use, then adjust the seat belt to suit.

LATCH ANCHOR POINTS

WARNINGS



Do not attempt to fit LATCH restraints to the centre seating position. The anchor bars are not designed to hold a LATCH restraint in this position.



If the restraint is not correctly anchored, there is a significant risk of injury to the child in the event of a collision or emergency braking.

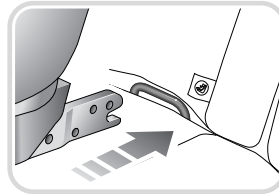
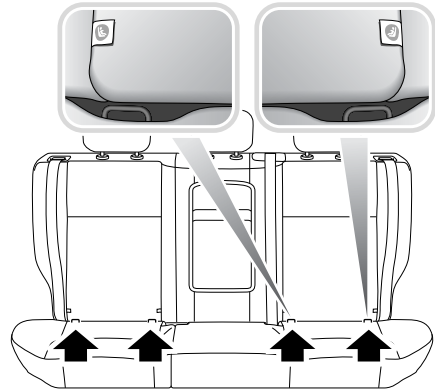


Child restraint anchorages are designed to withstand only loads imposed by correctly fitted child restraints. Under no circumstances are they to be used for adult seat belts, harnesses, or for attaching other items or equipment to the vehicle.

WARNINGS



If removing a head restraint in order to fit a child restraint, always secure the head restraint when storing it. If left loose in the vehicle it may cause death or serious injury during sudden braking or an impact.



E79364

Both of the outer seat positions on the rear seat are equipped to accept LATCH restraints.



This symbol is shown on a label sewn into the seats to indicate the position of the LATCH lower anchorages.

Installing a LATCH child restraint

To install an LATCH restraint :-

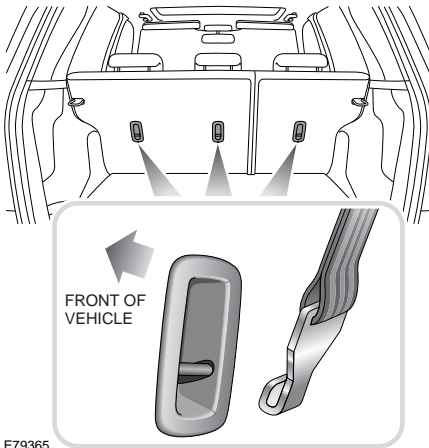
1. Raise or remove the head restraint.
2. Lift the velcro flap to expose the LATCH locking mechanism.

Child safety

- Slide the child seat into the locking mechanism.
- Test the security of the child restraint. To do this attempt to pull the restraint away from the vehicle seat and twist the restraint from side to side. Even if the restraint appears secure you should still check the anchor points visually to ensure correct attachment.

Note: Always ensure that if an upper tether is provided, it is fitted and tightened correctly.

Tether anchorages



E79365

WARNINGS

! Child restraint anchorages are designed to withstand only those loads imposed by correctly fitted child restraints. Under no circumstances are they to be used for adult seat belts, harnesses or for attaching other equipment or items to the vehicle.

WARNINGS



Always follow the child seat or restraint system manufacturer's instructions when fitting tether straps.



When fitting a child seat or restraint system, always pass the tether strap over the top of the seat back and beneath the underside of the head restraint.



If a child seat or restraint system is to be fitted to the centre seating position, the centre armrest must be in the stowed position (folded into the seat).

Attaching tether straps:-

- Install the child restraint securely in one of the rear seating positions.
- Pass the tether strap over the back of the vehicle seat and beneath the underside of the head restraint.
- Attach the clip on the head of the tether strap to the tether anchor on the back of the vehicle seat.

Ensure that the tether strap hook is facing the correct way. See illustration.

- Tighten the tether strap according to the manufacturer's instructions to remove any slack in the webbing.

Note: A tether anchorage is provided for the centre seat position, but should only be used where LATCH child restraints are unavailable.

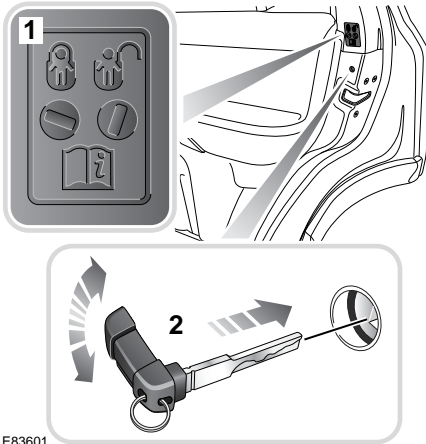
Child safety

CHILD SAFETY LOCKS

WARNING



Never leave children unsupervised in the vehicle. Doing so increases the risk of death or serious injury.



E83601

Child safety locks are fitted to the rear doors to allow you to prevent accidental opening of the doors when the vehicle is in motion.

If children are to be carried in the rear seat positions, it is recommended that the rear door interior handles are disabled.

Note: For convenience the rear door interior handles should be re-enabled when carrying adult passengers in the rear seat positions.

To change the child lock settings :-

1. Open the door to access the child safety lock.
2. Insert the emergency key into the slot, and rotate a quarter of a turn to enable, or disable the interior door handle as required.